

AWL02S/AWL02D

LED WALL WASHER

30W OR 50W

The AimLite single or double LED wall washer is made of an extruded aluminum housing which provides durability, clean lines and optimal thermal dissipation. The AWL02S (30W) and AWL02D (50W) come complete with J & J2 style track adapter. H & H2 style adapter available upon request. Suitable for ceiling-mounted tracks.



AWL02S



AWL02D

FEATURES & SPECIFICATIONS

CONSTRUCTION

Material

Die-cast aluminum driver housing.

Aiming

Precision aiming adjustment with a pivot that allows for rotations up to 350° vertically in both directions. Each side of the double fixture can be independently adjusted for more flexibility.

Drivers

Integral electronic driver, dimmable with standard dimmers.

LED

Single

30W LED: 3000K (2580 lm)
 (4000K upon request)

Double

50: 50W LED : 3000K (4737 lm)
 (4000K upon request)

Estimated lifespan of over 54,000 hours to L70.

Finishes

Heavy duty scratch resistant powder coated. Available in textured white and black (glossy silver upon request)

Lens and Louvers

The fixture comes with frosted lens in polycarbonate. Optional louvers available as accessories.

Adapter

Track heads with "J" adapter are classified to be used with AimLite ATJ track series, Juno T or TU track series and Prescolite TS or TT track series. Track heads with "H" adapter are classified to be used with AimLite ATH track series and Cooper Lighting L641/2/3 track series.

COMPLIANCES

- ICES 005
- ETL listed

OVERVIEW

LIGHT SOURCE	LED	EFFICIENCY (LM/W)	86 - 95
WATTS (W)	30 - 50	COLOR TEMPERATURE (K)	3 000 AND 4 000
LUMEN OUTPUT (LM)	2 580 TO 4 860	CRI	80+



Data is based upon tests performed in a controlled environment. Actual performance can vary depending on operating conditions. All products are subject to change or may be discontinued any time without notice.

AWL02S/AWL02D

ORDERING GUIDE

SERIES	WATTS [W]	COLOR TEMP. [K]	VOLTS [V]	ADAPTER	FINISH ²
AWL02S	30 - 30	30K - 3 000 40K - 4 000 ¹	4 - 120	J - J & J2 TRACK H - H & H2 TRACK ¹	BK - BLACK WH - WHITE
AWL02D	50 - 50				

¹ Please contact factory for availability.

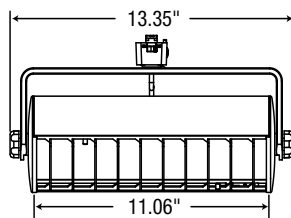
² For other options and availabilities please contact factory.

ACCESSORIES (SOLD SEPERATELY)

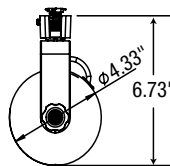
LOUVER
LEN325-WH
LEN325-BK

DIMENSIONS

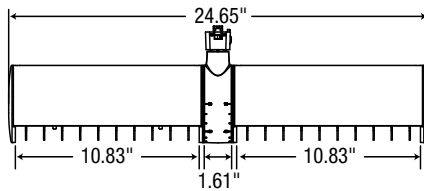
SINGLE



SIDE VIEW



DOUBLE



SIDE VIEW

